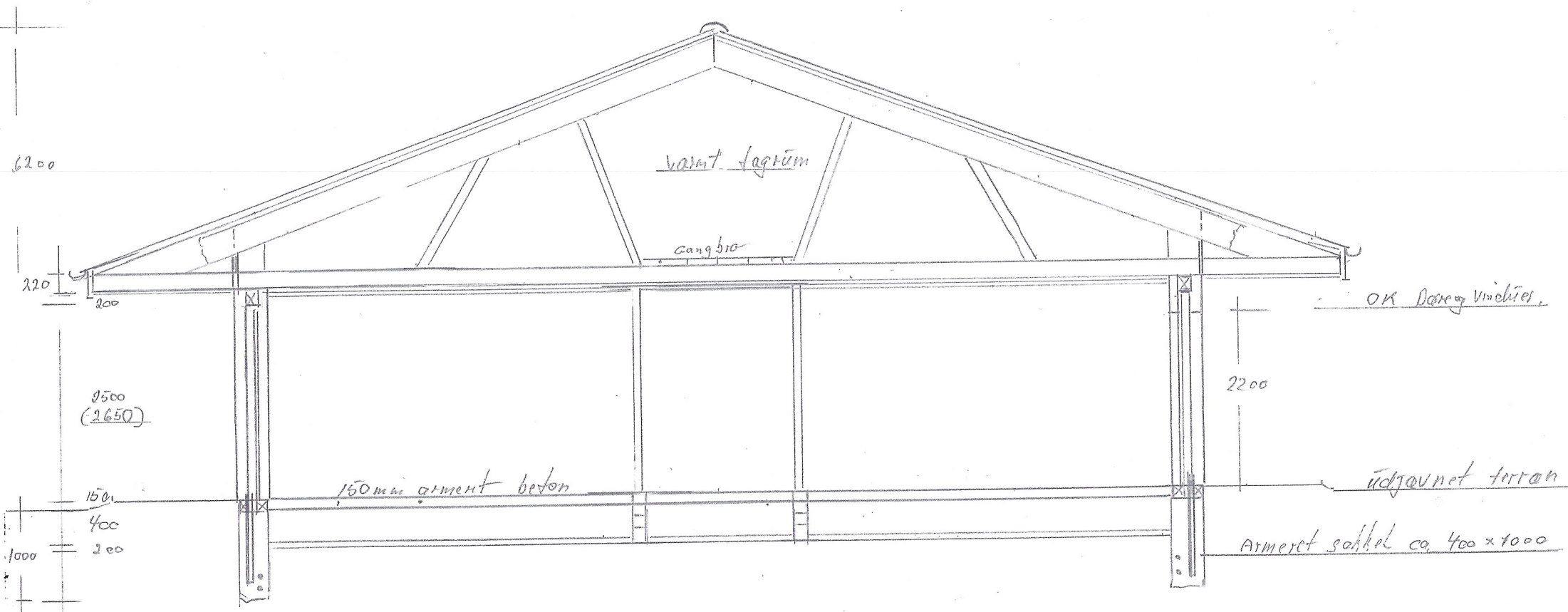


Snittegning 1:50

Sotttrøpskov vej

Matrikel nr. 559



- 150x200 Limtræs rem.
- HEB 100 L = 2650 væng.
- 190 mm Lecablokke m. isolering.
- 50x140 væng. Wjrm L = 1300
- 400 mm Polystyren
- Radon membran
- 200 mm Sand

OK Døren Vindues.

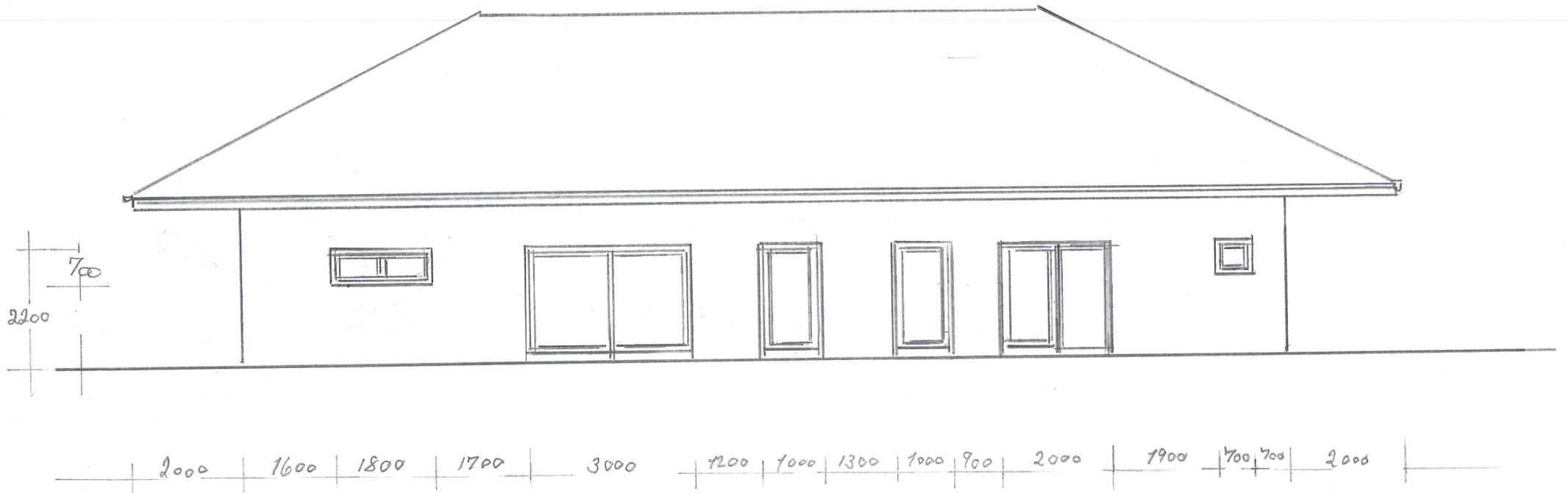
udgavnet terræn

Armeret søkkel ca. 400 x 1000

Sottrupskovvej 13

Matrikels nr. 559

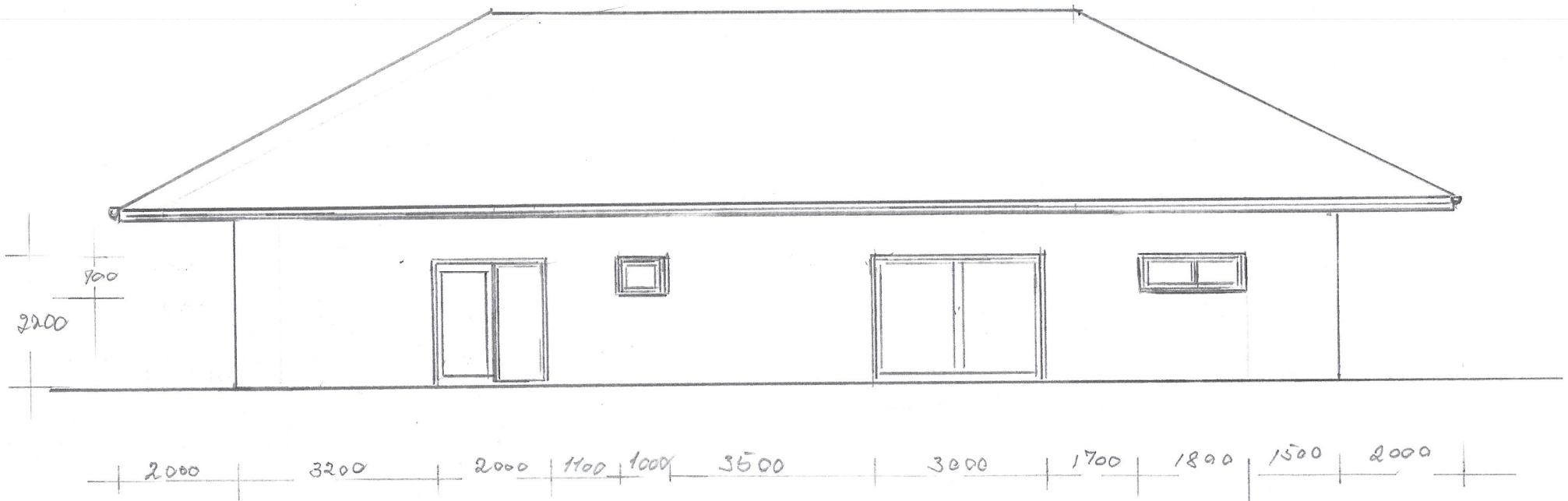
Facade mod vest



Søttrupskovvej 13

Matrikel nr. 559

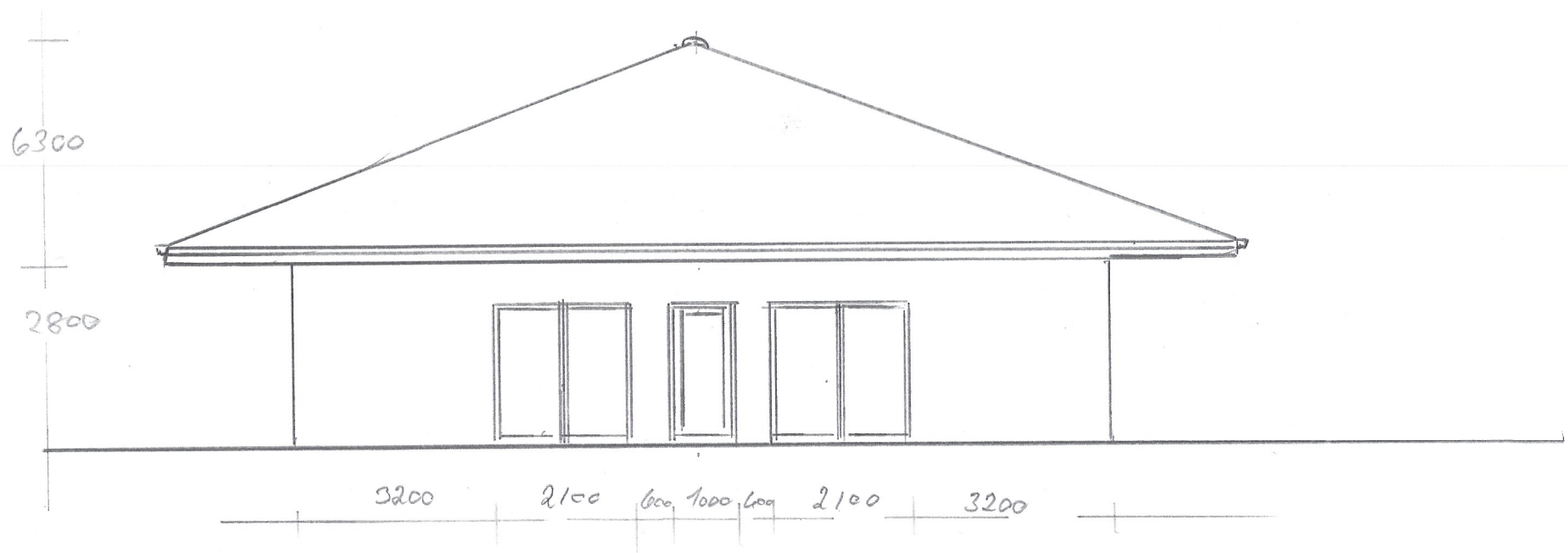
Facade mod øst



Sottrupskovvej 13

Matrikel nr. 559

Facade mod syd.

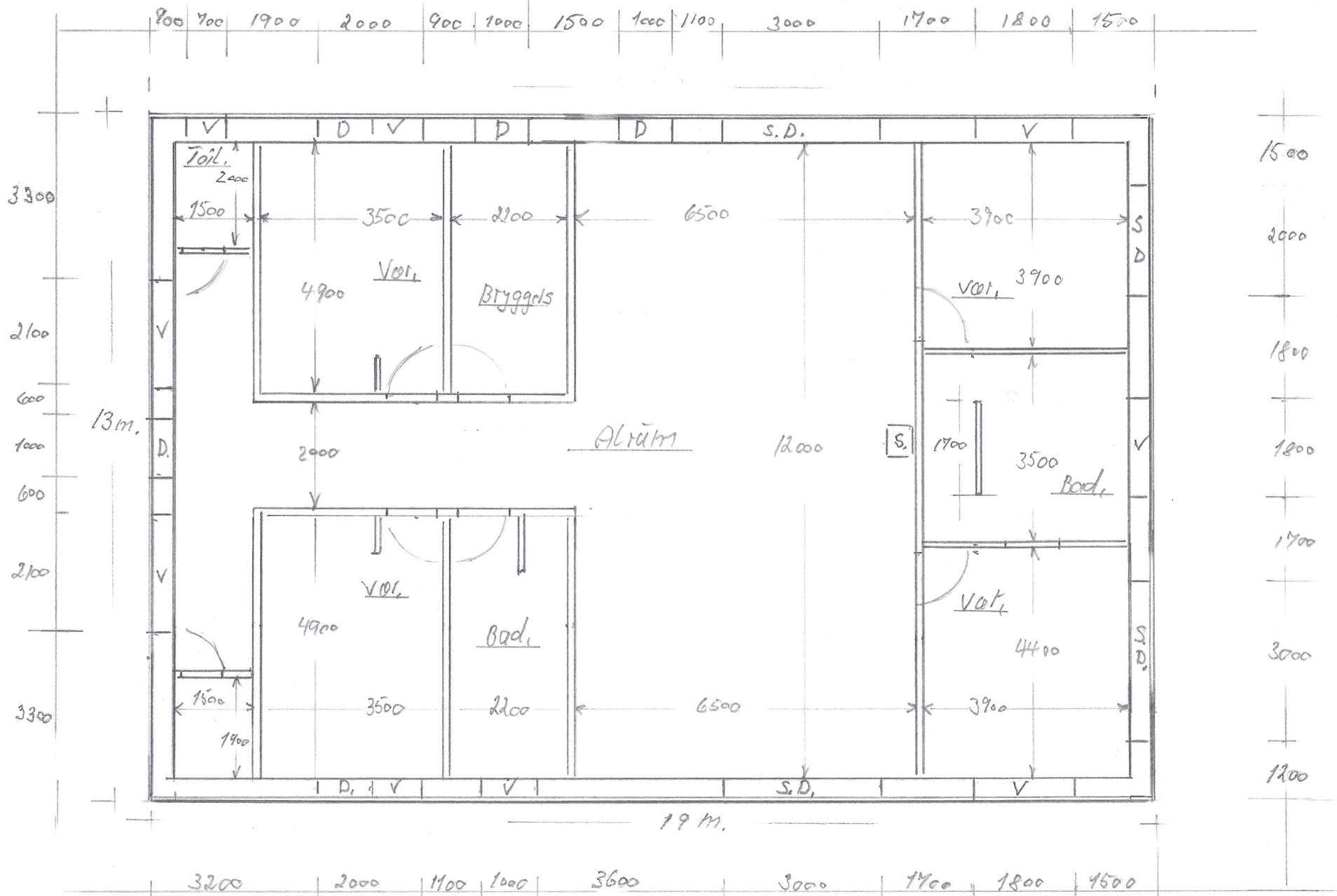


Sottrupshovvej 13

Matrikel nr. 559

Facade mod nord.





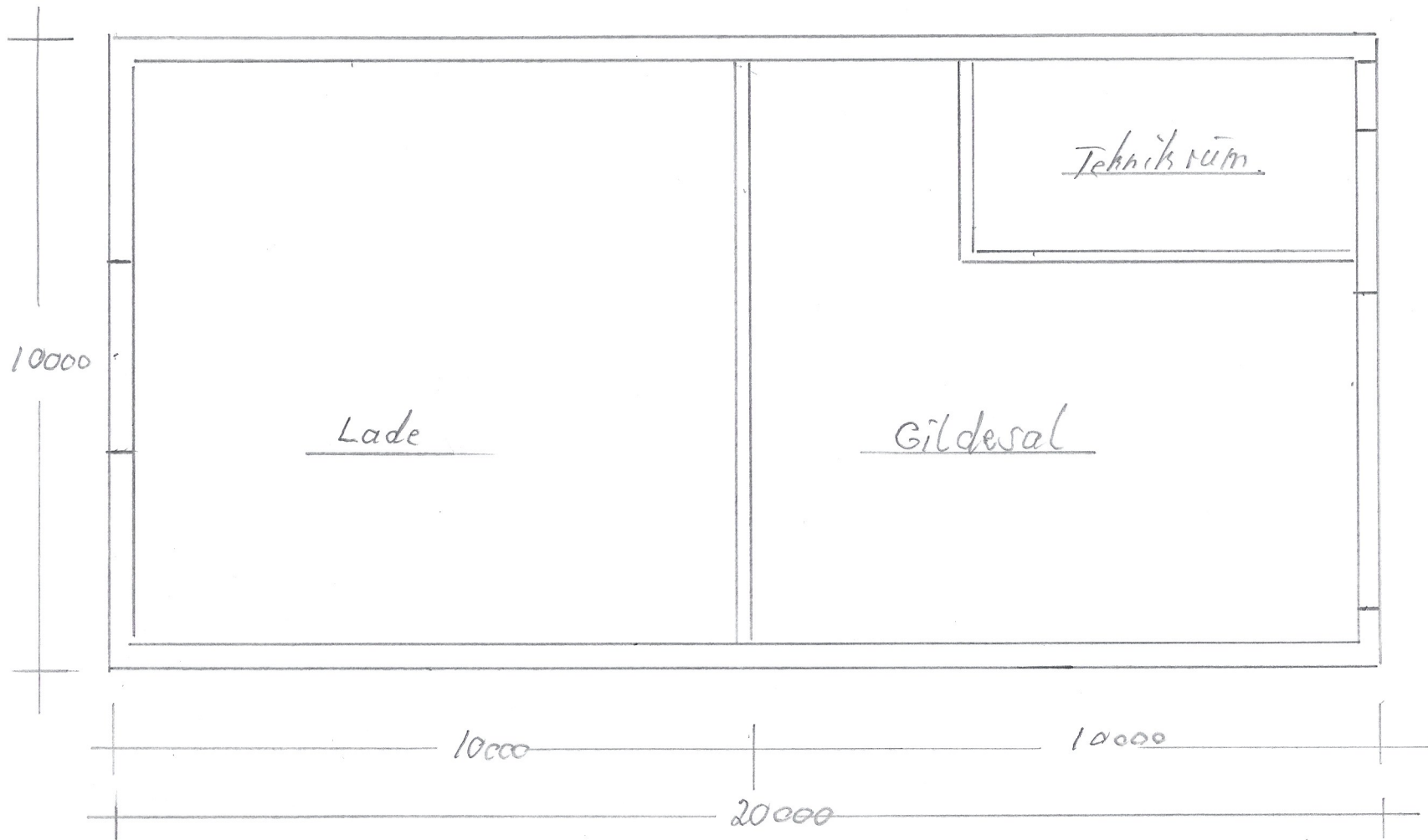
Sotttrupshov vej 13
 Matrikel nr. 559, Plan.

Sotttråpshov 13

Matrikel 559

Lade - Gildesal - Teknikr.

Plantegning 1:1000

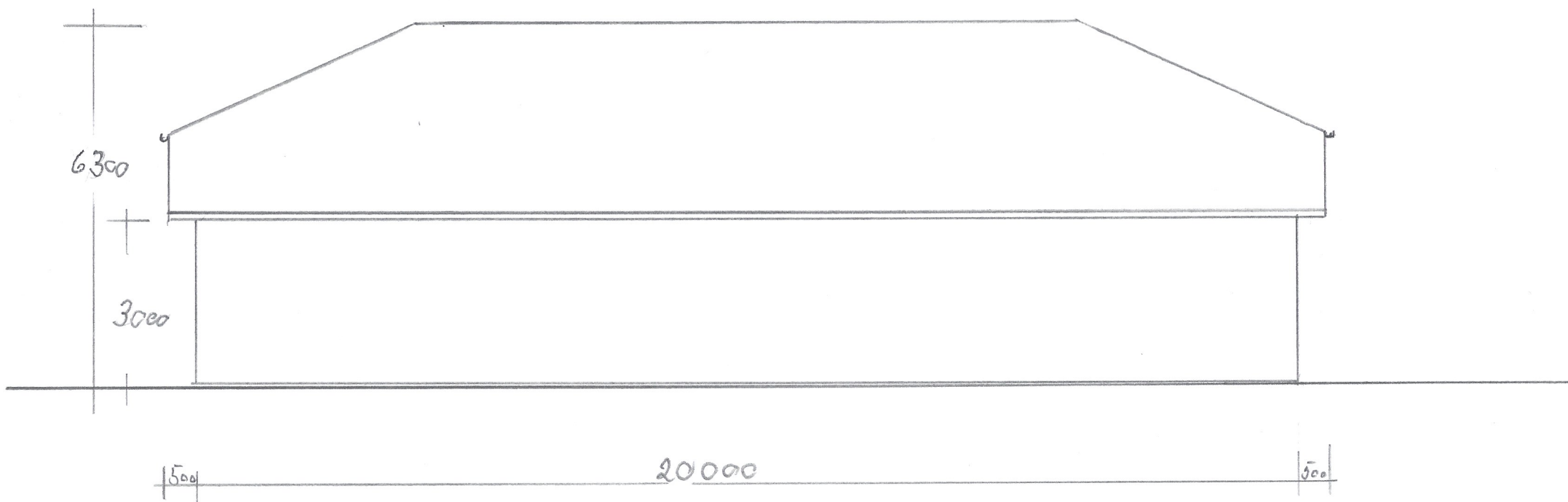


Sottnäs skov 13

Matrikel 559

Lade - Gildesal - teknik,

Facade mod syd.

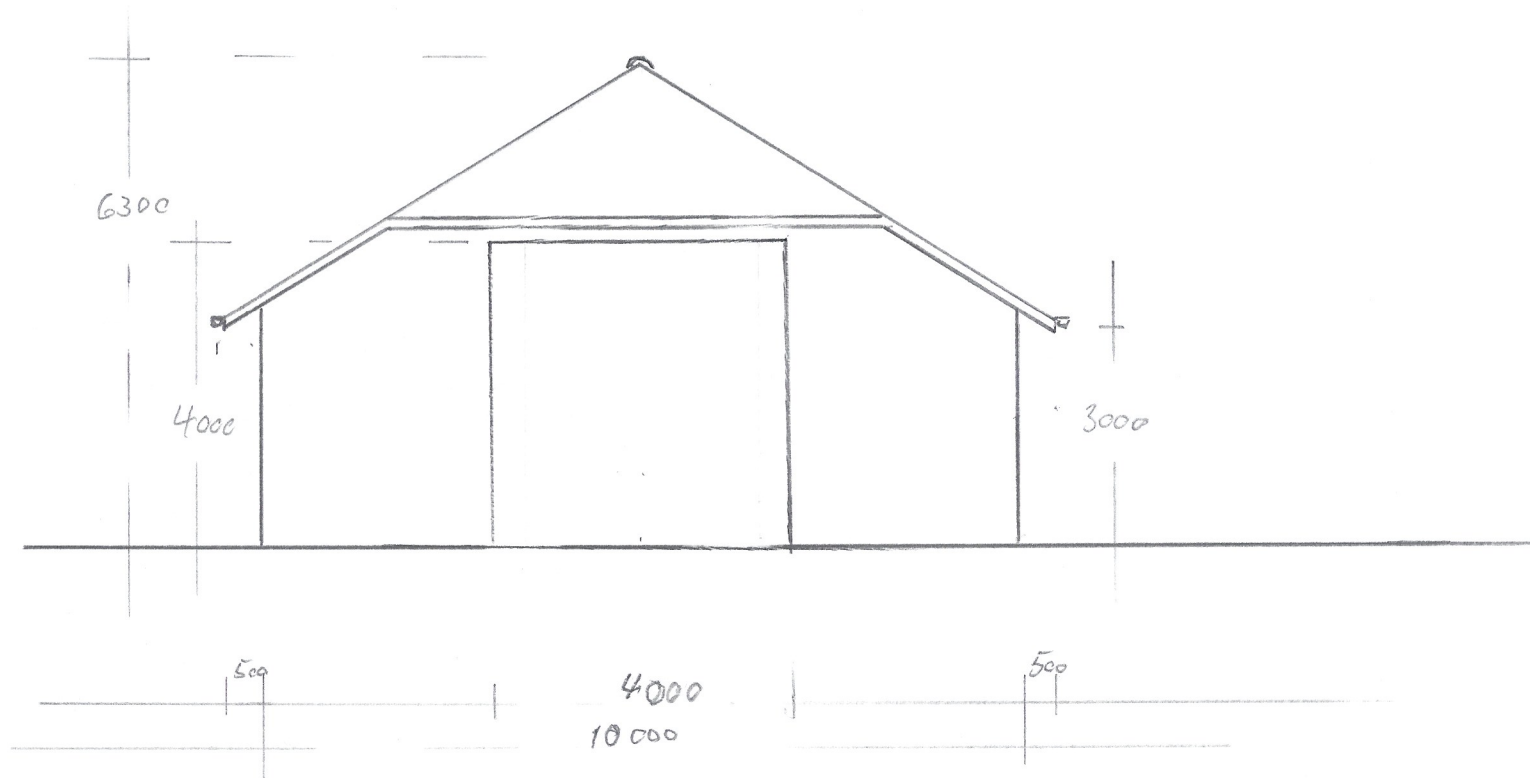


Sottrupshov 13

Matrikel nr. 659

Lade - Gildesal - Teknik

Facade mod vest

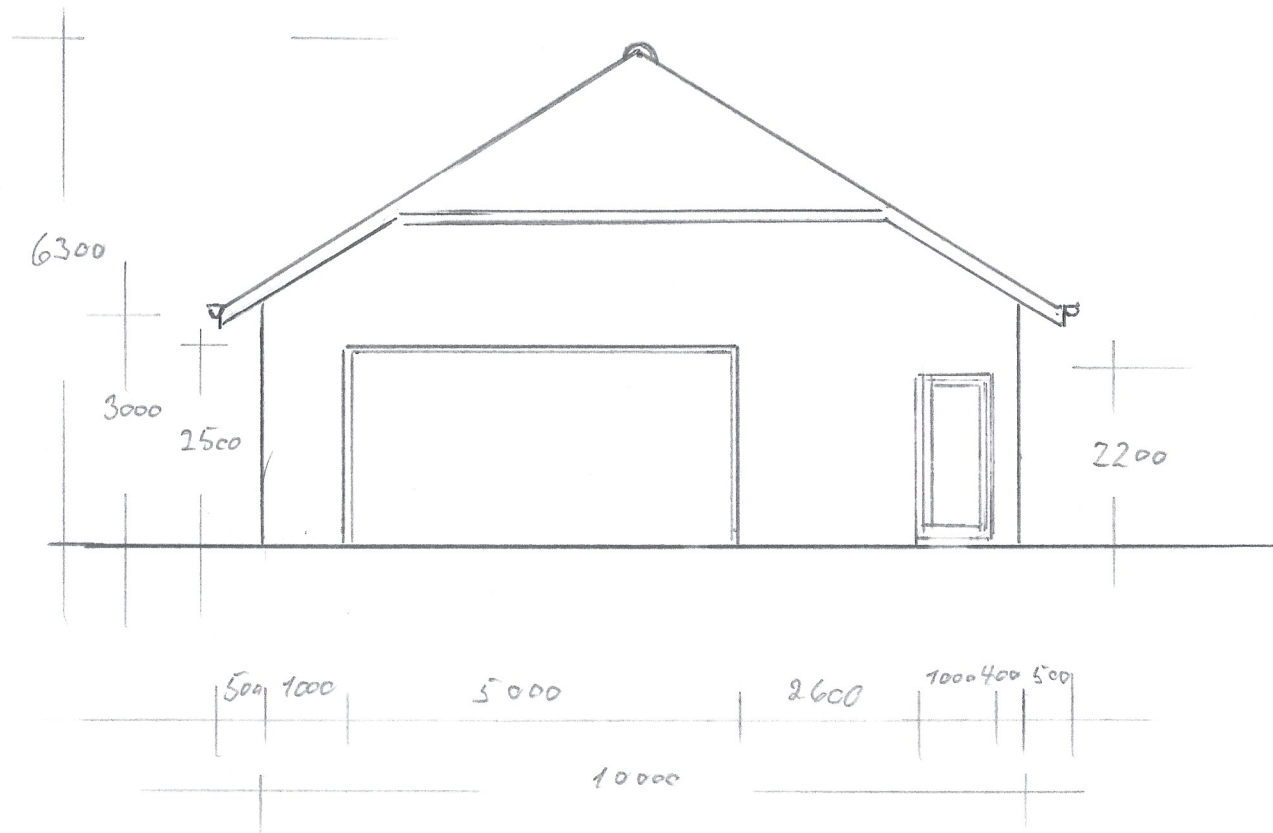


Søttrupskov 13

Matrikel nr. 559


Lade - Gildesal - Teknik.

Facade mod øst.



Sotträpskov 13

Modell nr 559

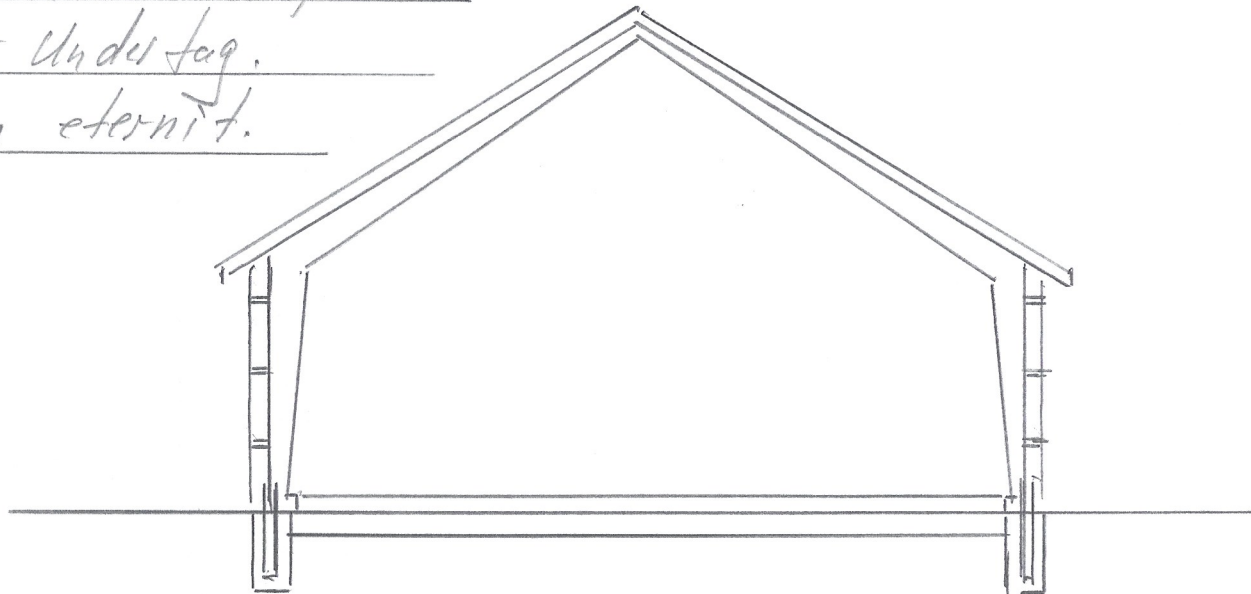
Snittegning: 

Traditionell stålkonstruktion

Åse med isolering

Lager Underlag.

Plan eternit.



Golv 150 mm betong arm.

Polystyren isolering.

Afsluttet sand.